

SS350 Airstream Food Trailer

Specification

Model:	SS350
Dimensions:	350*200*230cm
Window:	Concession windows, with gas struts & canopy
Electrical:	110V/60HZ
Material:	Exterior wall: Mirror stainless steel Insulation: 40mm Black cotton Interior wall: Stainless steel Workbench: 201 stainless steel Floor: Non-slip aluminium checkered floor
Trailer Accessory:	88cm safety chain Trailer hitch ball Trailer coupler Trailer stabilizers Heavy-duty trailer jack with wheel Flip down stainless steel serving shelf Door stop 7 pin trailer connector Standard gas piping Stainless steel gas tank holders Custom retractable canopy Brake system Ceiling air conditioner
Electrical System:	Electrical panel board Circuit breaker Power sockets Generator receptacles with cover
Lighting:	Interior LED light bars Side lights Trailer tail lights & red reflectors License lights LEO LOGO sign LED lights

Water Sink Kits:	3 compartment water sink with splash guard & drainboard Hand sink Commercial faucets for cold & hot water Floor drain
Water Supply System:	24V water pump 50L clean water tank 50L waste water tank
Kitchen Equipment:	Front stainless steel workbench with cabinets Rear stainless steel workbench Cash box 2m stainless steel range hood 250L under-counter fridge Double fryer Gas grill Gas stove with 2 burners 70L drink cooler Ice maker
Warranty:	1 year warranty for free
<p>For more information on this trailer model, such as size options, pricing, standard configurations, customization and upgrades, production time, delivery terms, etc., please email sales@etofoodcarts.com. Our sales agent will contact you within a day or even sooner to address any inquiries you may have.</p>	

etodevice

Details



- Front -



- Side -



- Side -



- Side -



- Rear -



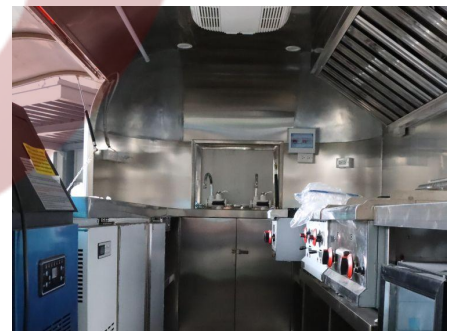
- Door -



- Vents -



- Inside -



- Inside -



- Floor -

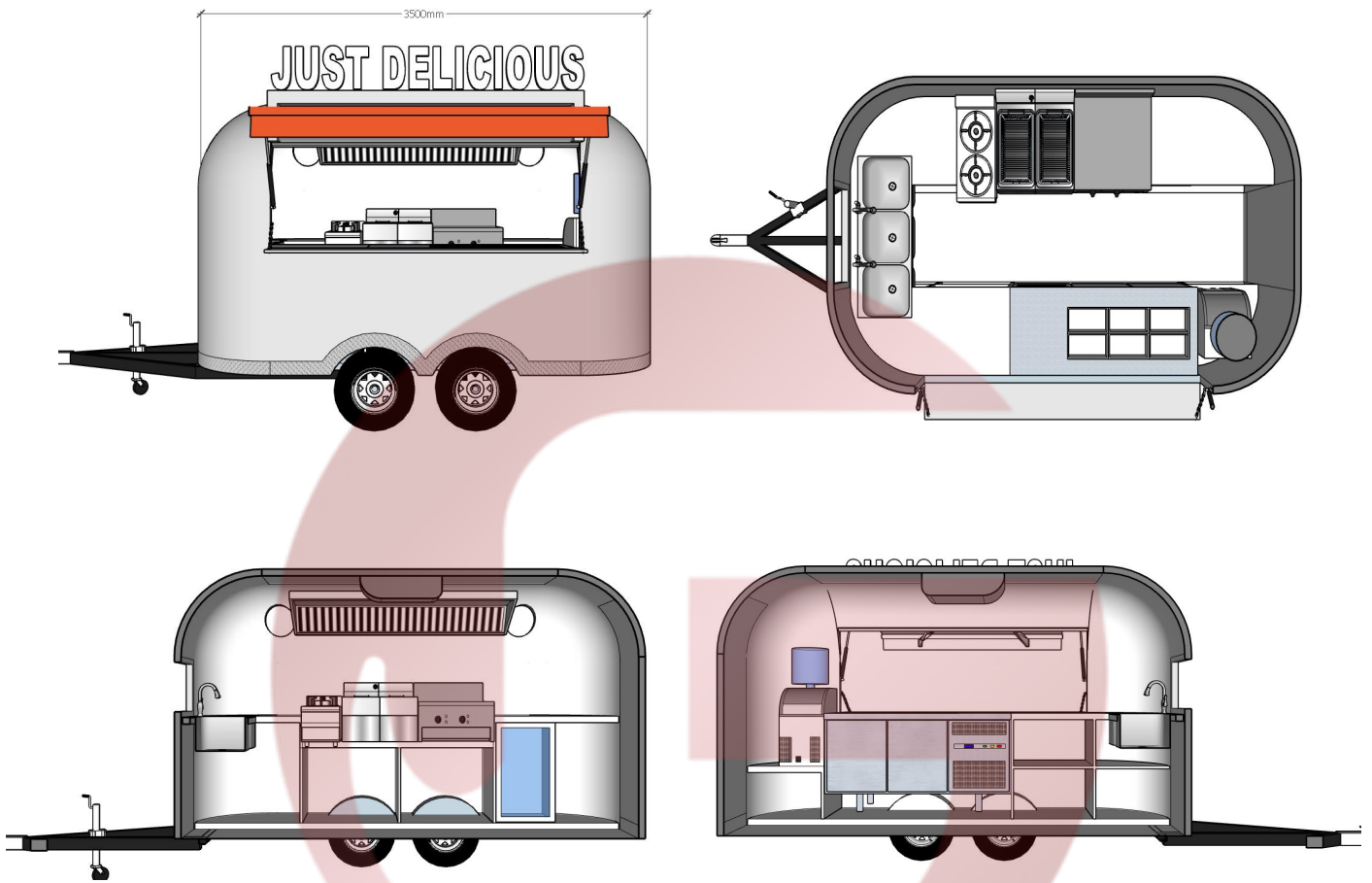


- Cooking Equipment -



- Range Hood -

Design



etodevice